

MUNCKHOF



“L” TRIMMERS

BLADE DESIGN

The Carbon steel advantage

Trimmer blades are not all manufactured the same. Blades used on Munckhof Trimmers, Hedgers and Pruners are among the best in the industry. This high quality is achieved by using superior material and taking extra care in manufacturing.

Our blades are made of abrasion-resistant, high-carbon, nickel chrome-alloy steel. This steel (commonly used for Mining and rock abrasion applications) has the hardness to be extremely resistant to wear and breakage. Unlike the lower-carbon blades used by many manufacturers.

Munckhof blades will withstand hard objects with no chipping while remaining ductile enough to non work harden and crack. Our blades have a Rockwell Hardness of ~47C. Which results in a surface that is within the goldilocks zone between pre mature wear and being overly brittle. The result is a better cutting job and longer blade life.

In providing a quality blade, the attention given to the manufacturing process is as important as using high-quality material. Munckhof blades are precision manufactured. The process includes:

Laser cutting to an angled shape so that the blade cuts over the vine rather than chopping straight against the canopy wall.

precision milling at each end for a smooth, sharp cutting surface.

Flattening to ensure a perfectly straight and balanced cut.

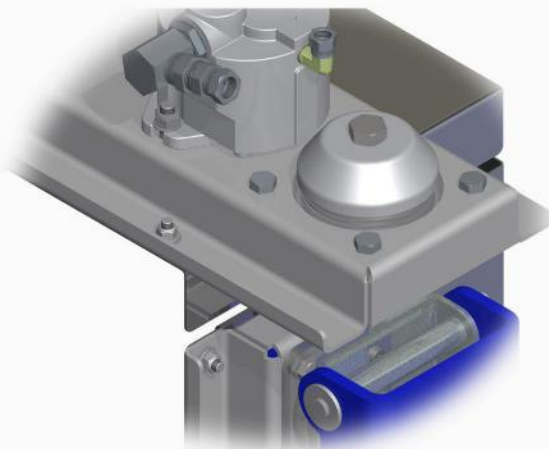
Finally the blades are inspected. This ensures that only the best blades are used.

During assembly, the blades are placed on the trimmer so that the beveled edge faces away from the canopy. This is because the straight edge of the blade will leave a cleaner cut against the canopy side of the machine, leaving less damage on the plant.

HEAD DESIGN

Friction Brake

L Trimmers use a unique positive locking friction brake that allows the head to swing away when contacting objects in the field. This simple yet effective design requires no replacable shear bolts, and uses no complex parts or control systems.



BELT DRIVE

V Belt technology

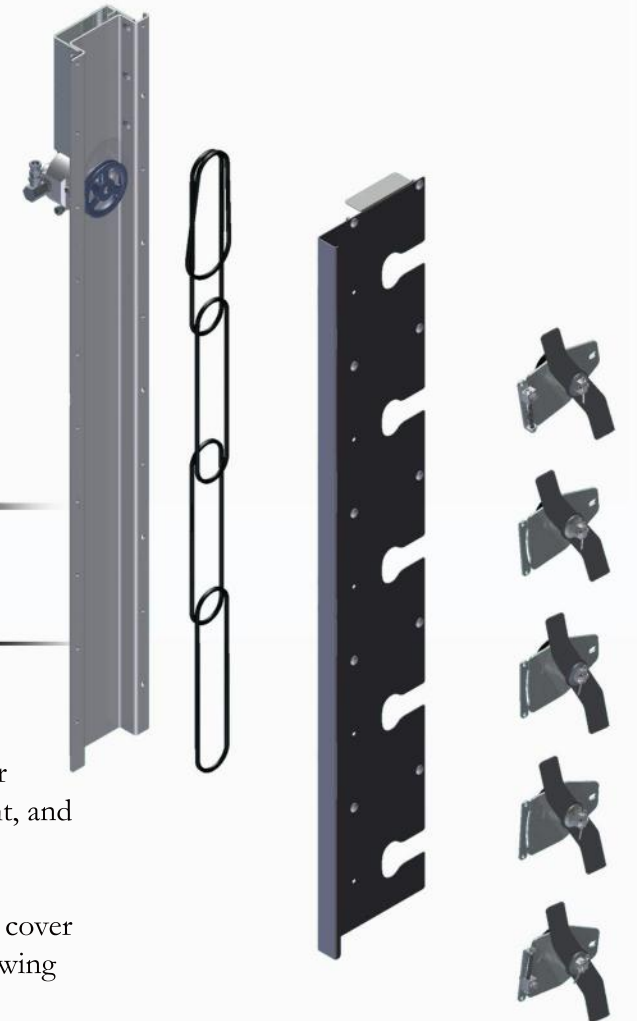
V Belts are used for the drive system in the Munckhof line. Also known as a friction drive, the V belt offers many advantages.

V belts require no maintainace and are lubrication free.

By employing a modular chain, belts are kept shorter and can transfer more power, also forces are distributed evenly over the blade housing.

Belts sizes are standard, and readily available at local supply shops.

If a blade contacts a post or immovable object, slipping can occur, preventing machine damage or breakage.



BODY STRUCTURE

Unibody Strength

The Trimmer frame is constructed of a two piece, frame and cover unibody design. This allows for a ridgid structure that is lightweight, and easy to access for maintainence and repair.

By incorproating sloted openings for the blade housings, the cover can be slid back without having to remove the blade housings, allowing open access to the belt drive system with only minutes of work

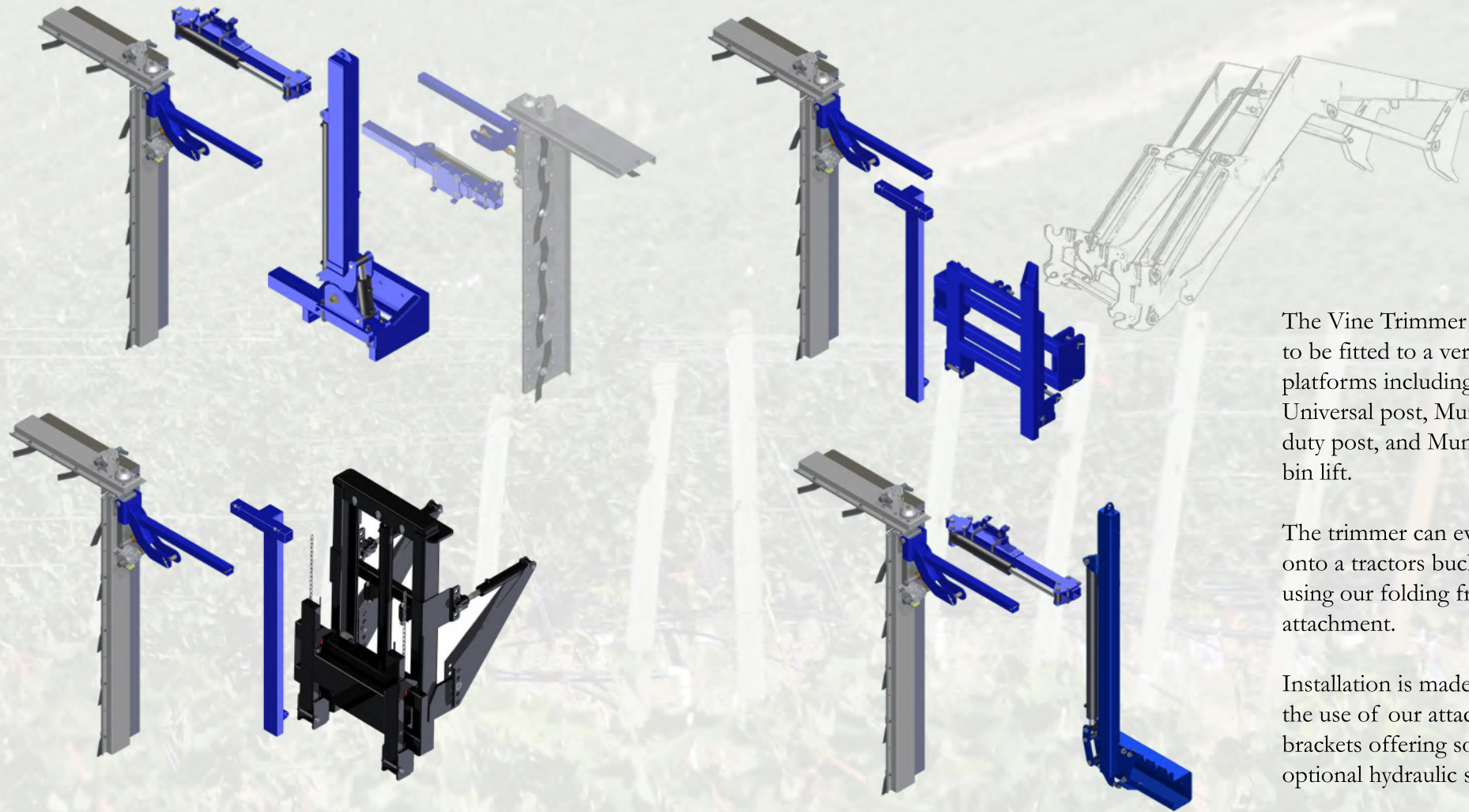
Average weight of an L trimmer head is only 265 lbs, allowing for installation on lighter tractors, and use in terrain where mechanical trimming may not have been an option before.

DEPENDABILITY

All the implements in the Munckhof line of vineyard equipment are designed, tested and manufactured at our facility in Oliver British Columbia. Because we are a North American manufacturer we deliver equipment that is designed to work in North American plantations. We are able to control every step of the production process and each machine is wet tested before it leaves our factory.

In your owners manual, universal language is used to describe all Hydraulics, bearings and belting. Because we use standard SAE components, parts can be obtained through local sources, greatly reducing downtime.

MOUNTING



The Vine Trimmer is light enough to be fitted to a variety of platforms including the Munckhof Universal post, Munckhof light duty post, and Munckhof vertical bin lift.

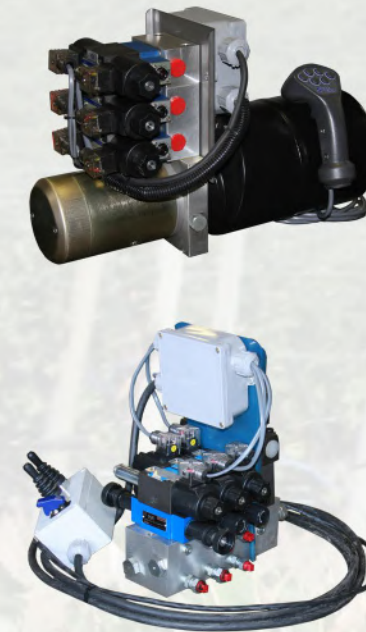
The trimmer can even be installed onto a tractor's bucket loader arms using our folding front bin fork attachment.

Installation is made simple with the use of our attachment brackets offering solid attach or optional hydraulic sideshift.

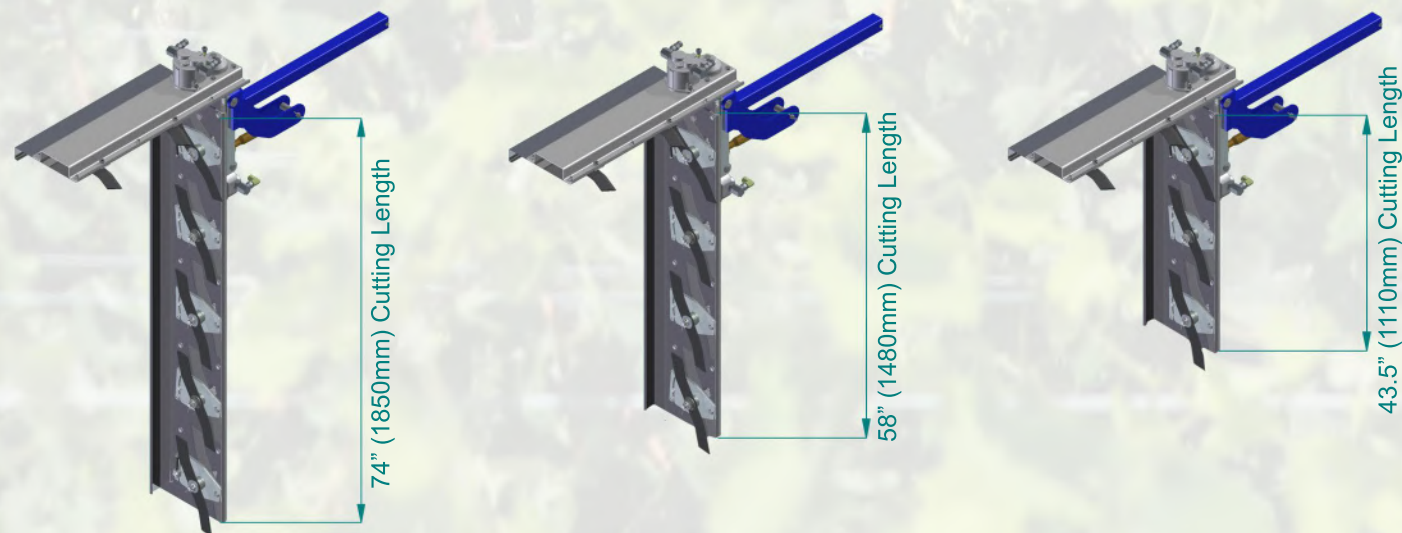
Supplemental hydraulic options are also available to further ease the use of our machines, we offer two types;

The 12VDC electric/hydraulic power pack is a self-contained pump and reservoir. It utilizes the tractor's electric power system to generate hydraulic flow capable of operating the lifting and tilting operations of the post.

The hydraulic splitter block is a valve system. Utilizing the tractor's hydraulic power, it can split a single hydraulic inlet into multiple outlets capable of operating all the functions of the post including the Trimmer head (presuming a sufficient hydraulic supply)



TRIMMER SPECS



The active cutting length of the trimmer is determined by the amount of vertical blades are on the model. Cutting lengths of 74", 58", and 43.5" are standard.

Also adjustable is the angle of the sides, which is able to tilt in or out to the operator's desired specification.

Tilt is available on the trimmer head standard as a manual turnbuckle or optional as hydraulic adjustment



Munckhof Manufacturing

www.munckhof.com

Box 308
Oliver, British Columbia
VOH 1T0

Tel: 250-498-4426
Fax: 250-498-4460
Email: office@munckhof.com



MUNCKHOF

Your **Munckhof** dealer,